



**SOCIO ECOLOGICAL
PROFILE
BARANGAY 36
BACOLOD CITY**

Tel no 434-3785

VISION

A progressive barangay with empowered citizenry centered by God-loving people, love of the environment and enhanced quality of standard living contributing to the growth of the city.

MISSION

The barangay officials along with its people shall promote security & welfare by providing quality basic services and implement the laws and projects for the success of the barangay.

Historical Background

Barangay No. 36 known as “Lechonan Country” was officially created in 1973 by virtue of Presidential Decree No. 86-A stating that all Barrios and Poblacions in the Philippines will be changed into Barangays. Pursuant to Republic Act 3550 as amended by Presidential Decree No. 86 and 86-A become the Barangay Charter. This decree further provided that a Barangay development fund be created solely for community development projects which meet the requirement set forth by the secretary of local government and community development. All the specification on the powers, functions, duties and responsibility in the old charter were automatically adopted by the Barangay as bases for administrative policies. On December 17, 1985, City Ordinance No. 08 was created approving and adopting the recommended delineation of boundaries of sixty-one Barangay in the City of Bacolod.

LAND AREA AND OTHER DATA

Barangay No. 36 is bounded on the North by Hernaez Sreet on the East by Araneta Street, on the West by Yulo Street, and on the South by Lupit River.

Land Area: 14.86694 hectares

Topography: 100% Plain

Classification: Urban

POPULATION

BARANGAY	2020	2021	2022	2023	2024	2025
Barangay 36 (Pob.)	1321	1339.7582	1358.78277	1378.07748	1397.64618	1417.49276

Number of Puroks:

1. Purok Maharlika
2. Purok Immaculada-Corazon
3. Purok Libertad
4. Purok Litsonan
5. Purok Sunshine

DEMOGRAPHIC INFORMATION

It has a Catholic Church, Church of the Latter Day Saints, Masonic Temple and five (5) Pre Schools, Three (3) Public Elementary Schools and a Public High School in the surroundings, and thus Barangay No. 36 plays a role in the Development of the City of Bacolod.

A total of five (5) pre-schools (all private which serves the populace in terms of pre-schools) are located in the Barangay namely:

1. Jolly Toddler
2. FWC Kinder School
3. Top Joy Kinder School
4. Eliakim Kinder School and
5. Bacolod Christian School

Elementary education

1. ETCS 1
2. ETCS 11
3. Rizal Elementary School

High School where the residents go which are adjacent to our Barangay.

1. Negros Occidental High School

A newly built LCC HRM Center is the only College School located at Barangay No. 36. But most of the College students go next by Bacolod City College and other universities.

Population (2015 census): 1,661

BARANGAY CAPTAIN	JOEMARIE FERNANDEZ BIASCA
SANGGUNIANG BARANGAY MEMBER	JOSIE MAE PANES CLAU
SANGGUNIANG BARANGAY MEMBER	AMELITA SOMIDO DESOY
SANGGUNIANG BARANGAY MEMBER	MELANIE DELA TORRE SERUELO
SANGGUNIANG BARANGAY MEMBER	LALAIN ORTEGA NAPURA
SANGGUNIANG BARANGAY MEMBER	ARLENE YAP CUACHON
SANGGUNIANG BARANGAY MEMBER	REY ILIGAN GOLEZ
SANGGUNIANG BARANGAY MEMBER	EDSIL GARCIA YASAY

Barangay 36 (Pob.)	Elective	SK Chairperson	JANELLE	PLOMEDA
Barangay 36 (Pob.)	Elective	SK Member	SHAINA ERIKA	DAVID
Barangay 36 (Pob.)	Elective	SK Member	THEO MANUEL	DURABLE
Barangay 36 (Pob.)	Elective	SK Member	ANGELICA	FLORES
Barangay 36 (Pob.)	Elective	SK Member	ALAYSSA DAWN	PANES
Barangay 36 (Pob.)	Elective	SK Member	APPLE	CASTOR
Barangay 36 (Pob.)	Elective	SK Member	RASTY ANN	DEL PRADO
Barangay 36 (Pob.)	Elective	SK Member	MICHAEL JOHN	NAKANO

Barangay Organizations

- Birhen sang Barangay
- Demolay (Mason)
- Student Missionary Outreach (SMO)
- SK
- BRGY. 36 Scholars Association

ECONOMIC SECTOR

Barangay No. 36 has improved much of its economy due to the rise of new building and businesses. UTC Corporation had just started building their commercial center on their one (1) hectare property: LCC College had just opened their four (4) storeys, HRM and Tourism Center. There are two gasoline stations; motor vehicle and other shops also existed. Our barangay is also home of the famous Bong-Bong's Barquillos and Piaya, but more than a quarter of the barangay's total population depends on litson, meat, meat products and slaughtering job, as the City Slaughter House is located within our boundary.

INFRASTRUCTURE SECTOR

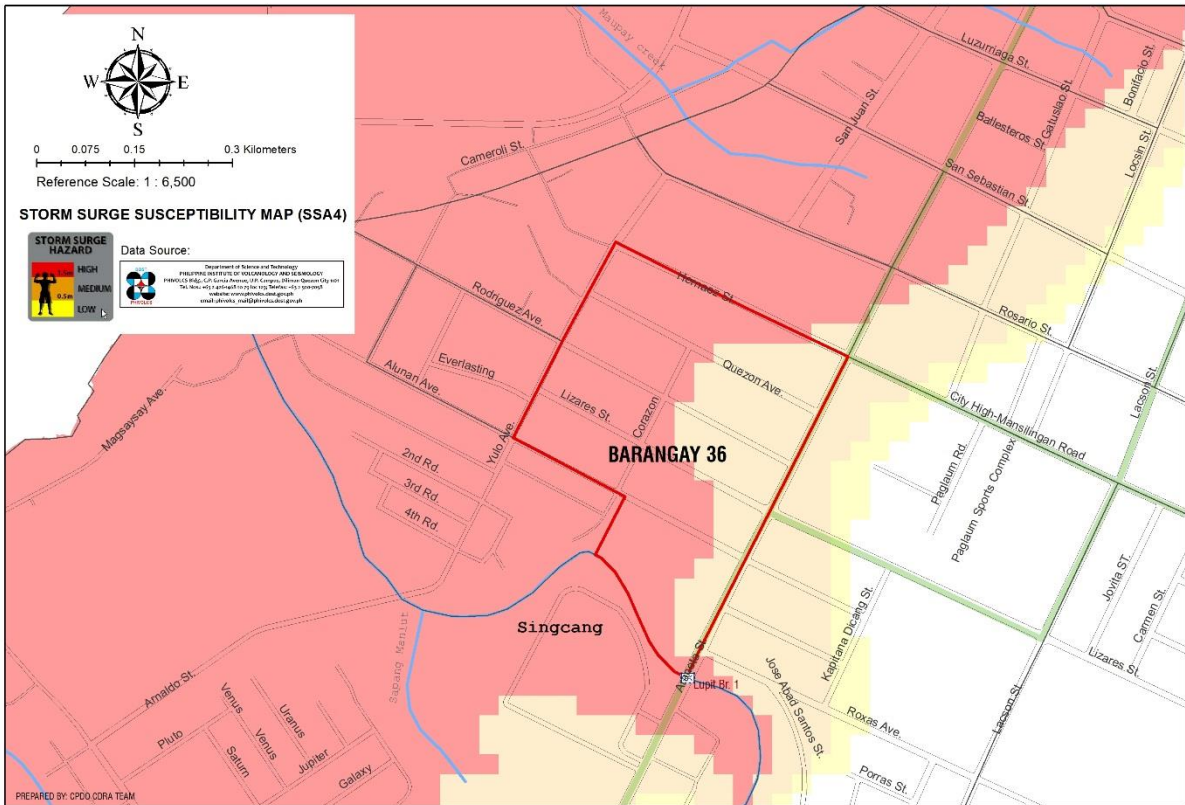
As the City of Bacolod goes with the Economic boom, Barangay No., 36 pace with it, as it is zoned as a commercial center. BACIWA, bottled water and purifiers are supplying portable water, Motor pumps and artesian well is used other than for drinking. Communication lines are readily available either for social needs, business and other functions, if one is willing thru the services of PLDT, Globe lines and other telecommunications company which caters cellular phones. CENECO provides the electrical power consumption of the residential. Lupit River serves as one of the two main outlets of the barangay drainage system, except for temporary clogs during rainy seasons, the system is still effective. Not unless a new drainage masters plan the City may undertake to cater the growing need for an expanding economy.

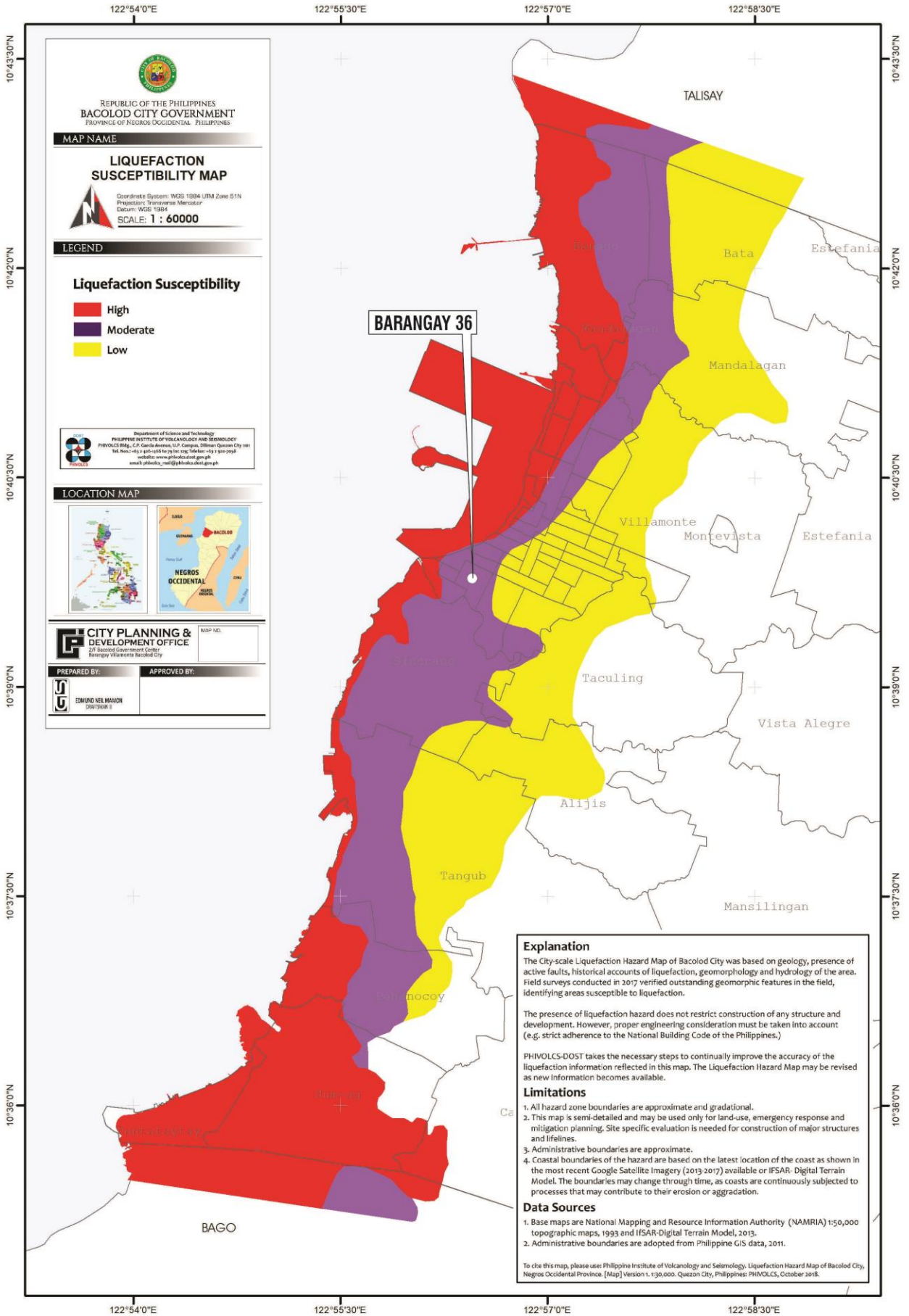
Annual Investment Plan (AIP)

YEAR	PROGRAM / PROJECT / ACTIVITY	AMOUNT
2023	Rehabilitation of Drainage System and de clogging of canals	345,000.00
TOTAL		345,000.00

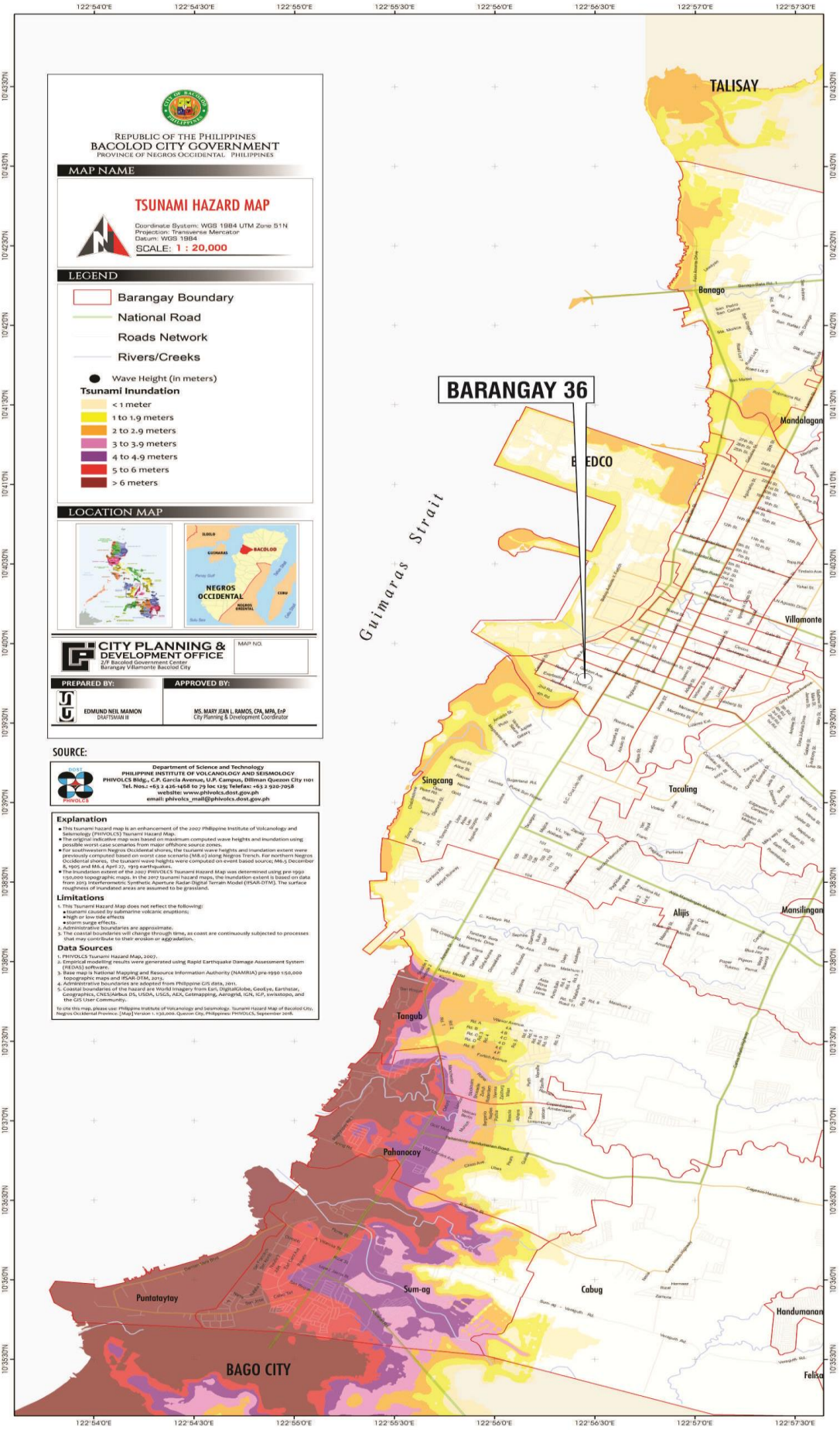
BARANGAY 36
CDRA
Climate & Disaster Risk Assessment


 **CITY PLANNING & DEVELOPMENT OFFICE**
Climate & Disaster Risk Assessment (CDRA) Team



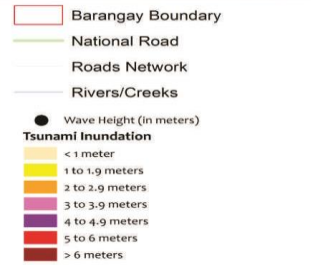







 REPUBLIC OF THE PHILIPPINES
BACOLOD CITY GOVERNMENT
 PROVINCE OF NEGROS OCCIDENTAL, PHILIPPINES

MAP NAME
TSUNAMI HAZARD MAP
 Coordinate System: WGS 1984 UTM Zone 51N
 Projection: Transverse Mercator
 Datum: WGS 1984
SCALE: 1 : 20,000

LEGEND


LOCATION MAP


CITY PLANNING & DEVELOPMENT OFFICE
 2/F Bicol Government Center
 Barangay Villamonte Bacolod City
 MAP NO. _____
PREPARED BY: EDMUND NEIL MAMON, DRAFTSMAN II
APPROVED BY: MS. MARY JEAN L. RAMOS, CPA, MPA, EdP, City Planning & Development Coordinator

SOURCE:
 Department of Science and Technology
 PHILIPPINE INSTITUTE OF VOLCANOLOGY AND SEISMOLOGY
 PHIVOLCS Bldg., C.P. Garcia Avenue, U.P. Campus, Diliman Quezon City 1101
 Tel. Nos. +63 2 426-4444 to 29 129; Telefax +63 2 920-7958
 website: www.phivolcs.dost.gov.ph
 email: phivolcs_mail@phivolcs.dost.gov.ph

Explanation
 • This tsunami hazard map is an enhancement of the 2007 Philippine Institute of Volcanology and Seismology (PHIVOLCS) Tsunami Hazard Map.
 • The original indicator map was based on maximum computed wave heights and inundation using possible worst case scenario from major offshore source zones.
 • For southwestern Negros Occidental shores, the tsunami wave heights and inundation extent were conservatively computed based on source zone scenario (S&S) along Imbang Trench, the westernmost Subduction Zone. The tsunami wave heights were computed using the Composite Wave Scenario (CWS) 2007 and MA 4 April 27, 1910 earthquakes.
 • The inundation extent of the 2010 PHIVOLCS Tsunami Hazard Map was determined using pre-1910 1:50,000 topographic maps, in the 2010 tsunami hazard maps, the inundation extent is based on data from 2010 Interferometric Synthetic Aperture Radar Digital Terrain Model (SRTM30 PLUS). The surface roughness of inundated areas are assumed to be grassland.

Limitations
 1. This Tsunami Hazard Map does not reflect the following:
 • Inundation caused by submarine volcanic eruptions,
 • High or low tide effects,
 • Surge effects
 2. Administrative boundaries are approximate.
 3. The coastal boundaries will change through time, as coast are continuously subjected to processes that may contribute to their erosion or aggradation.

Data Sources
 1. PHIVOLCS Tsunami Hazard Map, 2007.
 2. Empirical modeling results were generated using Rapid Earthquake Damage Assessment System (REDAS) software.
 3. Wave map is National Mapping and Resource Information Authority (NAMRIA) pre-1990 1:50,000 topographic maps and RSAR-DTM, 2013.
 4. Administrative boundaries are adopted from Philippine GIS data, 2011.
 5. Coastal boundaries of the hazard are World Imagery from Esri, DigitalGlobe, GeoEye, Earthstar, Geographic/CNES/Airbus/CS, USDA, USDA, NGA, Comanair, Aermap, IGN, IGN, Swirevision, and the GIS User Community.
 6. This map was prepared using Philippine Institute of Volcanology and Seismology, Tsunami Hazard Map of Bacolod City, Negros Occidental Province. (Data) Version 1, 1:50,000, Quezon City, Philippines: PHIVOLCS, September 2010.